

LED FOLLOW SPOT 1000L

USER MANUAL

LED FOLLOW SPOT 1000L

USER MANUAL



TABLE OF CONTENTS

INSTRUCTION	2
DESCRIPTION OF THE DEVICE	2
1. Profile	2
2. Overview	2
3. Specification data	2
4. Photographic chart	3
5. Safety warning	3
Warning	3
Note	3
INSTALLATION	4
1. Installing	4
2. Connection with mains.....	5
3. Replacing fuse	5
4. Focus and Zoom	5
OPERATION	6
1. MENU	6
2. Dmx protocol	7
3. Description of the keys	8
APPENDIX	8
Problem and solution	8

1.INTRODUCTION

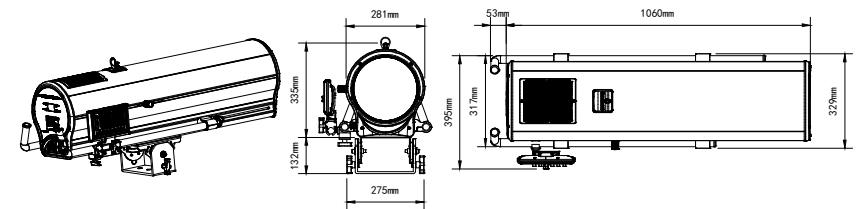
Thank you for having chosen a LED FOLLOW SPOT 1000L.You will see you have acquired a powerful and versatile device.

Unpack your LED FOLLOW SPOT 1000L,

Delivery includes:

Mounting holder	1PC
Power Wire	1PC
User Manual	1PC

2.Overview

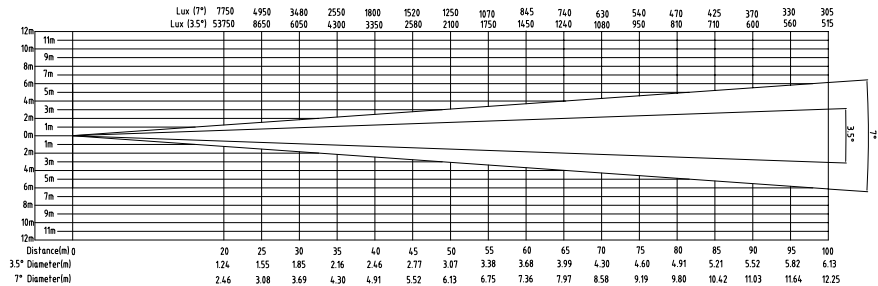


3.Specification

- Power Supply:AC100V-240V,50/60hZ
- Power Consumption:1280w
- LEDs:LED1000W
- Color temperature:7500K
- Luminous flus:59000lm-62000lm
- Lifetime of led:more than 50000 hours
- Focus and zoom:Manual
- Adjustable beam angel:3.5° -7°
- Heat dissipation:high quality radiator,low noise fan
- Dimmer:0-100% linear dimmer
- Strobe:1-20 flash per second
- OLED display
- Color wheel:7colors+open white

- CTO wheel:3200K+4500K+5600K
- Imported iffusion filters with high transmittance
- Logo gobo for option
- Control mode:international standard DMX512 signal,with XLR 3PIN or XLR 5PIN connerctors
- Channel mode:6 channels
- IP20
- Use environment temperature:-20℃—45℃
- N.W.: 32.6kgs

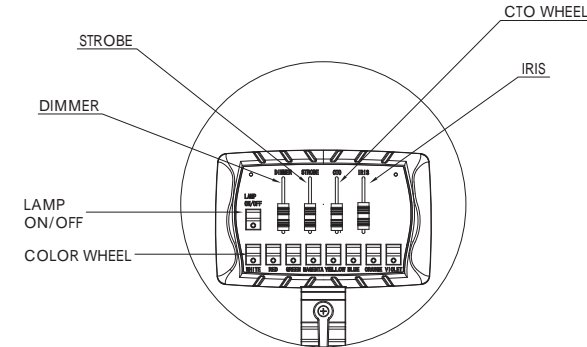
4.Photographic chart



5. Safety warning

- ①warning:
- Every person involved with the installation, operation and maintenance of this device has to be qualified
 - User must follow the instructions of this manual
 - Unqualified person can not open the housing cover and operate the device, or the dealer will not accept liability for any resulting defects or problems.
 - The device against rain and moisture
- ②Warning notes:
- Power supply: AC100V-240V/50HZ-60HZ
 - Make sure the power switch is off, the power plug, outlet and the earth connection is in well condition before connecting the device with the mains.
 - Please use qualified power plug and outlet. Never connect the power cord of this device with other electrical equipment.
 - During move and installation, make sure the device not crashed with metal parts and other tough materials.
 - Always disconnect from the mains, when the device is on installation and dismantled
 - The minimum distance between light-output and the illuminated surface must be more than 50cm.

3.description of the keys



APPENDIX

Problem and solution

Problem	Reason	Resolution
Device not work	No power	AC100V-240V,50HZ/60HZ
		Check the power connection, and make sure device connect the mains in well condition.
		Check if switch is on
Led bulb is off	led bulb damaged	Check if the fuse is good
		Replacing led bulb
		Replacing led driver board
Fans not work	Fans damaged	Replacing temperature switch
		replacing fans

Caution:

- Unqualified person involved with installation, operation and maintenance of this device is prohibited.
- If any above mentioned problem happened, or unknown problem happened, please contact manufactory or distributor for assistance.

2.Dmx protocol

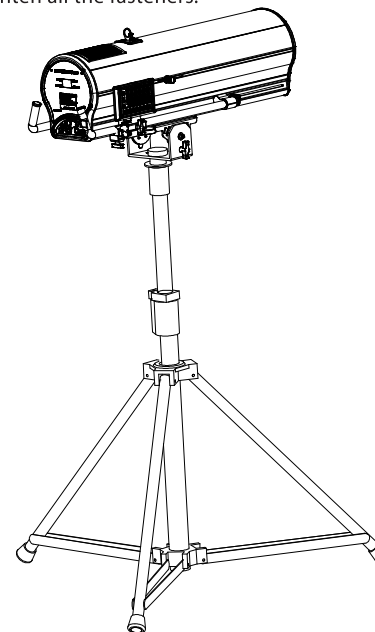
CHANNEL	NUMERIC	EFFECT
1	0---255	Dimmer
2	0---255	Strobe
3	000---063	Cold White
	064---127	5600K
	128---191	4500K
	192---255	3200K
4	0---016	White
	017---033	White+Ren
	034---050	Red
	051---067	Red+Green
	068---084	Green
	085---101	Green+Rose Red
	102---118	Rose Red
	119---135	Rose Red+Yellow
	136---152	Yellow
	153---169	Yellow+Blue
	170---186	Blue
	187---203	Blue+Orange
	204---220	Orange
	221---237	Orange+Purple
	238---255	Purple
5	0---255	IRIS
6	0---255	Softer

- The device must only be installed on a non-flammable surface. In order to safeguard sufficient ventilation, leave 50 cm of free space around the device. Please note that heat-sensitive objects may be deformed or damaged by the emitted heat.
- During the operation the housing becomes very hot! Do not operate the device for 15 minutes after switching off.
- The maximum ambient temperature $T_a = 45^{\circ}\text{C}$ must never be exceeded. The maximum housing temperature $T_b = 60^{\circ}\text{C}$ must never be exceeded.
- For indoors use.
- Replace any visible cracked protective shield, filters and lens.
- The protective shield, filters and lens will require weekly cleaning as smoke fluid tends to building up residues, reducing the light output very quickly.

INSTALLATION

1. Installation

- When installation, keep the device far away the heat sensitive objects and explosives sensitive objects, leave at least 50CM of free space around the device.
- Then put the device on the stand, make sure that the stand must be placed on the ground smoothly, and tighten all the fasteners.



- Please use qualified stand, and make sure the stand can withstand more than ten times the weight of device.

2.Connection with mains

- The person involved with the power connection must be qualified, and has the electrical engineering certificate.
- Connect the device to the mains with the power plug.
- The earth has to be connected.
- Power consumption 680W, input power supply AC100V-240V, 50/60Hz.

3. Replacing fuse

- Before replacing the fuse, unplug mains lead.
- Procedure:

Step 1: Unscrew the fuseholder on the rearpanel with a fitting screwdriver from the housing (anti-clockwise).

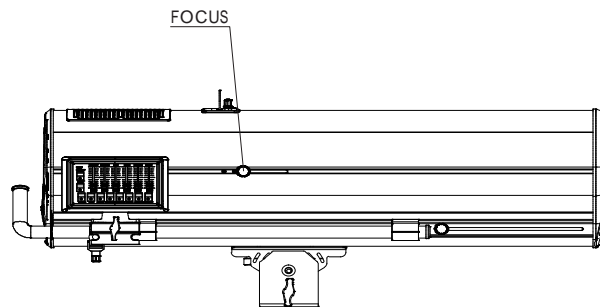
Step 2: Remove the old fuse from the fuseholder.

Step 3: Install the new fuse in the fuseholder.

Step 4: Replace the fuseholder in the housing and fix it.

4. Focus and Zoom

- when switch on the device and light the lamp, loosen the two screws of focus and zoom, and move the screws, to make the best spot image, then retighten the two screws of focus and zoom
- When the projection distance is changed, user can follow previous operating steps, and focus the projector



OPERATION

1.MENU

